



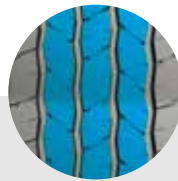
TRANSPORTER RF16

TRANSPORTER RF16 The tire tread is made of high elastic special compound, which can effectively shorten the braking distance. tire stronger and more resistant to damage.

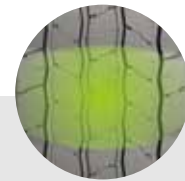
- RIM:5.5
- SPEED RATE:L
- RATIO:85
- SECTION WIDTH:195-205



Increased strong structure offer great loading ability.



Continous solid center ribs enhance steering stability.



Special tread compounds offer longer mileage.

| Wheel Diameter | Item No. | Sizes Description | Sidewall Description | Standard Rim | Section Width (mm) | OA. Diameter (mm) | Max. Pressure (kpa/psi) | UTQG | | |
|----------------|-----------|----------------------|----------------------|--------------|--------------------|-------------------|-------------------------|-----------|----------|-------------|
| | | | | | | | | Treadwear | Traction | Temperature |
| 16 | RF16R1601 | LT185/85R16 111/109L | BSW | 5.0 | 187 | 721 | 600/85 | - | - | - |
| | RF16R1602 | LT195/85R16 114/112L | BSW | 5.5 | 196 | 738 | 600/85 | - | - | - |
| | RF16R1603 | LT205/85R16 117/115L | BSW | 5.5 | 203 | 754 | 600/85 | - | - | - |